

MONTAGEANLEITUNG

installation instructions

Montage handleiding

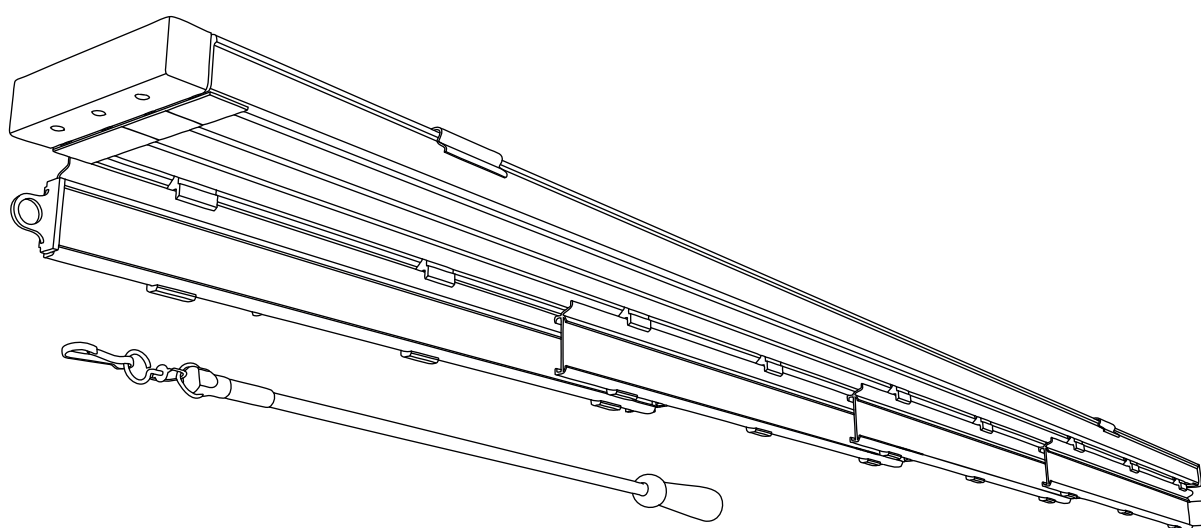
Instrucciones de montaje

Instructions de montage

Istruzioni di montaggio

Instrukcja montażu

Montaj talimatı



FL ÄCHENVORHANGSCHIENE

Panel curtain rail

Rail voor gordijnen voor grote ramen

Riel para cortina deslizante

Rail pour panneaux de voilage

Guida per tende a pannello

Szyna do zasłon panelowych

Panelli Dikey Perde Rayı

1 VERPACKUNGSGEHALT

package content ~ Verpakkingsinhoud ~ Contenido del embalaje

Contenu de l'emballage ~ Contenuto della confezione

Zawartość opakowania ~ Paket içeriği

1-2 MONTAGE

installation ~ Montage ~ Montaje ~ Montage ~ Montaggio

Montaż ~ Montaj

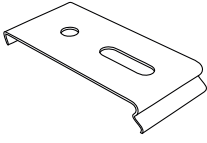
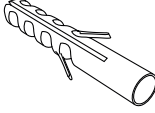
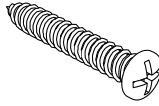
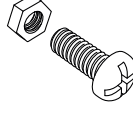
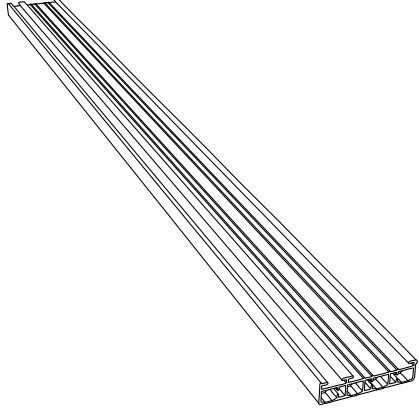
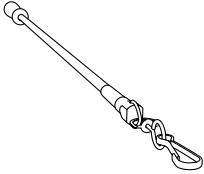
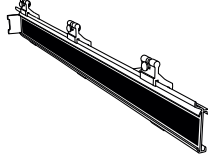
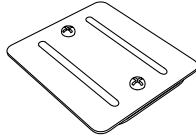
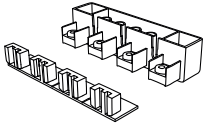
3 KONTAKTINFORMATIONEN

contact information ~ Contactinformatie ~ Contacto

Coordonnées de contact ~ Informazioni di contatto

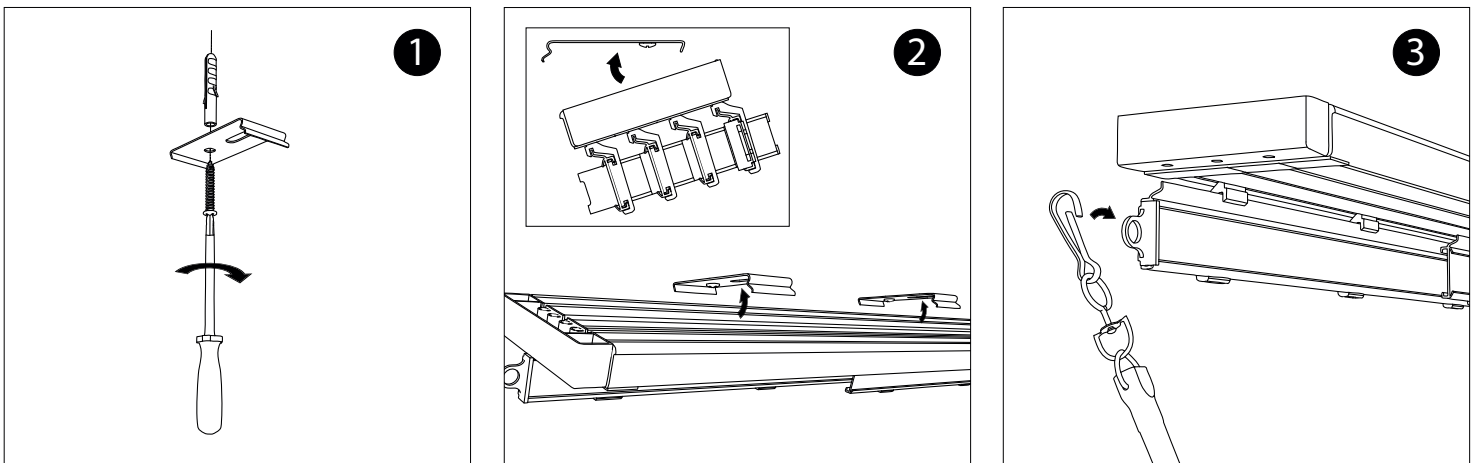
Informacje kontaktowe ~ İletişim bilgileri

[VICTORIA·M]

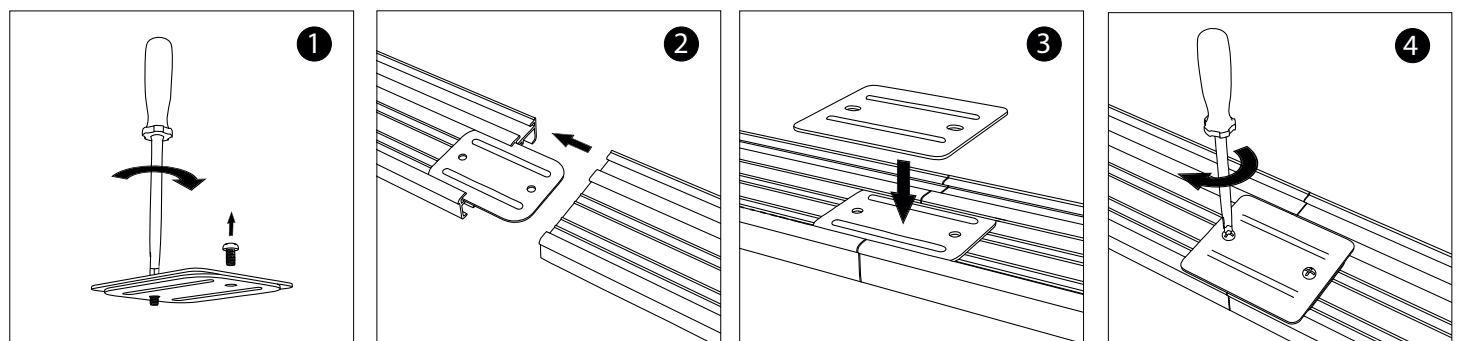
3 Panel Kit / 166 cm = 3 3 Panel Kit / 219 cm = 4 3 Panel Kit / 272 cm = 5 5 Panel Kit / 272 cm = 6 5 Panel Kit / 325 cm = 8	3 Panel Kit / 166 cm = 6 3 Panel Kit / 219 cm = 8 3 Panel Kit / 272 cm = 10 5 Panel Kit / 272 cm = 12 5 Panel Kit / 325 cm = 16	3 Panel Kit / 166 cm = 6 3 Panel Kit / 219 cm = 8 3 Panel Kit / 272 cm = 10 5 Panel Kit / 272 cm = 12 5 Panel Kit / 325 cm = 16	3 Panel Kit / 166 cm = 3 3 Panel Kit / 219 cm = 4 3 Panel Kit / 272 cm = 5 5 Panel Kit / 272 cm = 6 5 Panel Kit / 325 cm = 8	3 Panel Kit / 166 cm = 1 3 Panel Kit / 219 cm = 2 3 Panel Kit / 272 cm = 2 5 Panel Kit / 272 cm = 2 5 Panel Kit / 325 cm = 2
				
3 Panel Kit / 166 cm = 1 3 Panel Kit / 219 cm = 1 3 Panel Kit / 272 cm = 2 5 Panel Kit / 272 cm = 1 5 Panel Kit / 325 cm = 1	3 Panel Kit / 166 cm = 3 3 Panel Kit / 219 cm = 4 3 Panel Kit / 272 cm = 5 5 Panel Kit / 272 cm = 5 5 Panel Kit / 325 cm = 6	3 Panel Kit / 166 cm = 0 3 Panel Kit / 219 cm = 1 3 Panel Kit / 272 cm = 1 5 Panel Kit / 272 cm = 1 5 Panel Kit / 325 cm = 1	3 Panel Kit / 166 cm = 2 3 Panel Kit / 219 cm = 2 3 Panel Kit / 272 cm = 2 5 Panel Kit / 272 cm = 2 5 Panel Kit / 325 cm = 2	
				

DECKENMONTAGE

Ceiling mounting ~ Montage tegen het plafond ~ Montaje en el techo ~ Montage au plafond ~ Installazione a soffitto ~ Montaż na suficie ~ Tavana montaj

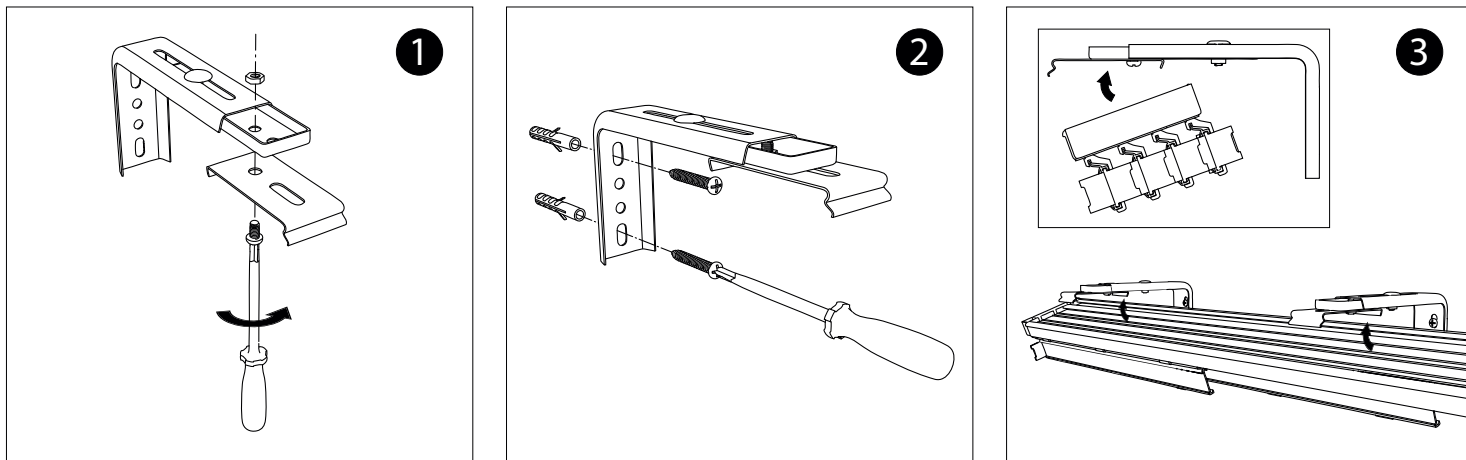


2-TEILIGE SCHIENEN VERBINDEN

Join 2-part rails ~ 2-delige rails verbinden ~ Unión de rieles de dos partes ~ Connecter les rails en 2 parts
Collegamento delle guide a 2 componenti ~ Łączenie szyn dwuczęściowych ~ 2 parçaları rayın bağlantısı

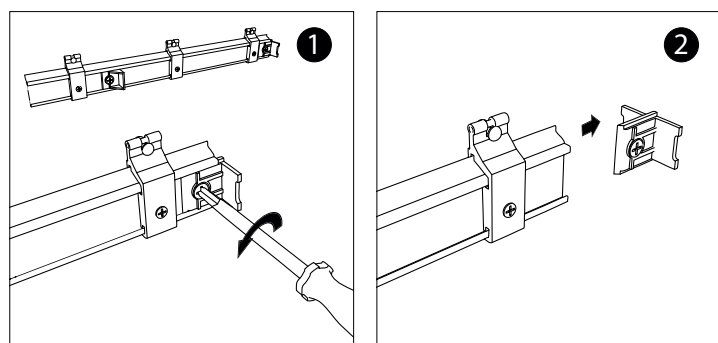
WANDMONTAGE (optional)

Wall mounting (optional) ~ Montage tegen de muur (optie) ~ Montaje en la pared (opcional) ~ Montage murale (en option)
 Installazione a parete (opzionale) ~ Montaj na ścianie (opcjonalnie) ~ Duvara montaj (opsiyonel)



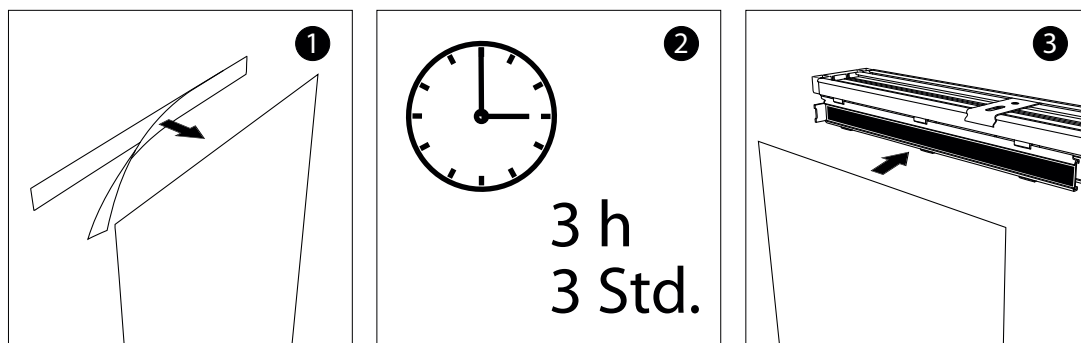
FREILAUF OHNE MITNEHMER (optional)

Free-running without carriers (optional) ~ Vrijloop zonder meenemer (optie) ~ Marcha libre sin talón de arrastre (opcional) ~ Course libre sans entraîneurs (en option)
 Corsa libera senza trascinatori (opzionale) ~ Swobodne przesuwanie bez zabieraków (opcjonalnie) ~ Kamsız serbest hareket (opsiyonel)



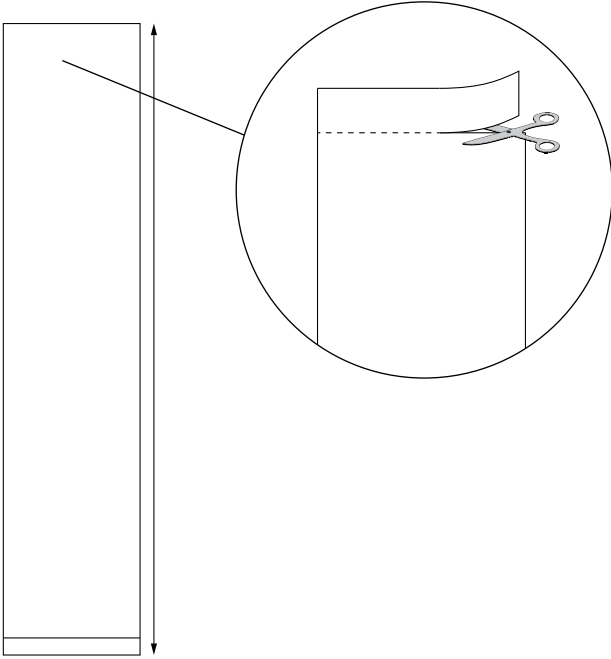
Panele befestigen

Fix panels ~ Panelen bevestigen ~ Fijar los paneles ~ Fixer les panneaux ~ Fissaggio dei pannelli ~ Mocowanie paneli ~ Panellerin sabitlenmesi



Panele Kürzen

shortening panels ~ Panelen inkorten ~ angostar los paneles ~ raccourcir les panneaux ~ accorcire dei pannelli ~ skracanie paneli ~ Panellerin k isaltmak



KONTAKTINFORMATIONEN

contact information ~ Contactinformatie ~ Contacto ~ Coordonnées de contact ~ Informazioni di contatto ~ Informacje kontaktowe ~ İletişim bilgileri

Sollten Sie probleme mit unserem Produkt oder ein defektes Gerät erhalten haben, wenden Sie sich bitte schriftlich oder per Email an folgende Adresse:

Should you experience problems with our product and find that the device received is faulty, please contact us in writing or by email at the following address:

Als u problemen heeft met ons product of een defect toestel hebt ontvangen, neem dan schriftelijk contact op of e-mail naar:

En el caso de que tenga un problema con nuestro producto, o que lo haya recibido con un defecto, póngase en contacto por escrito o por e-mail a la siguiente dirección.

Si vous rencontrez des problèmes avec notre produit ou un appareil défectueux, veuillez nous contacter par lettre ou par e-mail à l'adresse suivante:

Qualora sorgano dei problemi con il nostro prodotto o si riscontrino difetti nell'apparecchio, rivolgersi per iscritto o via e-mail al seguente indirizzo:

W razie problemów z naszym produktem lub w przypadku otrzymania wadliwego produktu prosimy o kontakt mailowy na adres:

Ürünlerimizle sorun yaşıyorsanız veya arızalı bir ürün aldıysanız lütfen yazılı olarak veya e-posta ile aşağıdaki adrese başvurunuz:

[VICTORIA·M]

ist eine eingetragene Marke der
SCHÖNBERGER Rolladenfabrik GmbH & Co. KG

Münchner Straße 49-51
82069 Hohenschäftlarn

Tel.: 08178 / 932 932
Fax.: 08178 / 932 939
info@victoriam.de

Technische Änderungen, Druckfehler und Irrtümer behalten wir uns vor.

Technical changes, printing and other errors excepted.

Technische wijzigingen, drukfouten en vergissingen zijn voorbehouden.

Sujeto a modificaciones técnicas, errores de impresión y equivocaciones.

Sous réserve d'erreurs, de modifications techniques, ainsi que de changements de modèle ou de gamme.

Ci riserviamo il diritto di modifiche tecniche, errori di stampa e sbagli.

Zastrzegamy sobie prawo do pomyłek, błędów w druku oraz do wprowadzania zmian technicznych.

Teknik değişiklik, baskı hataları ve yanlışla haklarını saklı tutmaktayız.